

SewerVUE MPIS Float

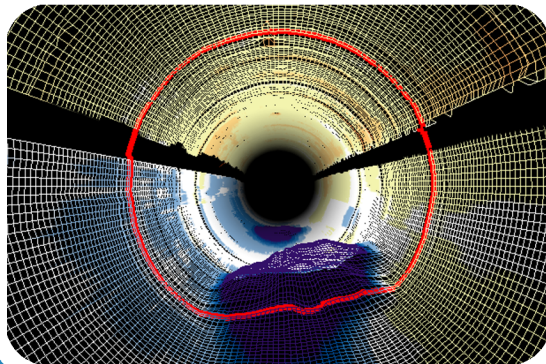
SewerVUE

IN-PIPE GPR

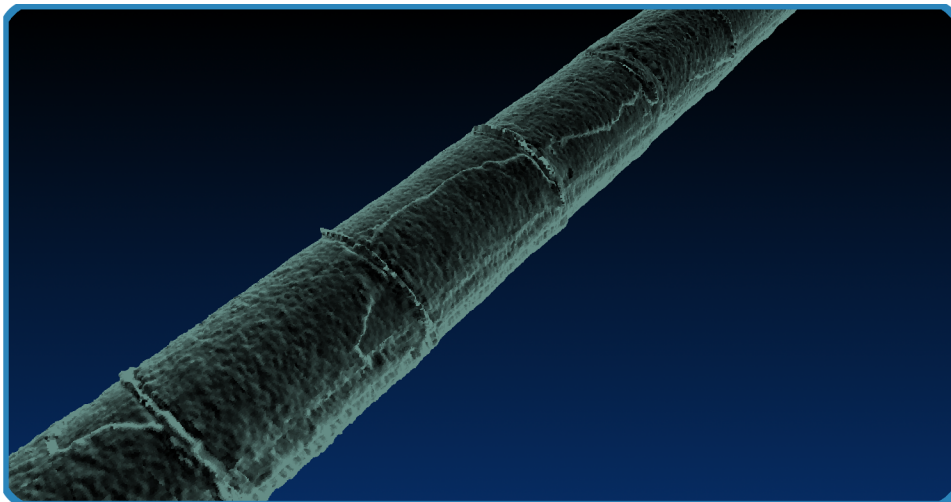


SewerVUE's long range multi-sensor pipe inspection technology combines state of the art data collection and analysis with proprietary processing and reporting software.

3-D LiDAR, sonar, and HD-CCTV combine for unparalleled measurements of what's inside your pipe.

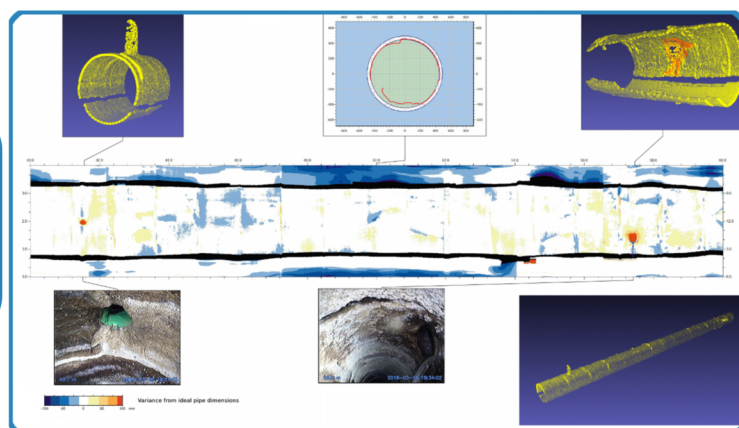


- 1,000 m (3,380 ft) standard range, with the option for more
- For pipes 450 mm (18 inch) or much larger
- No bypass pumping required
- Deploys through any standard 19 inch manhole



Get quantitative data with state of the art pipeline inspection technology

Generate detailed 3-D point clouds to determine ovality, sediment volume, and corrosion with unprecedented accuracy. Detailed enough for slipline design.



Take guesswork out of wastewater pipe inspection. In a single run, the SewerVUE MPIS Float can collect enough data to tell you the precise size and shape of the pipe, with detailed geometric information about **cracks, features, ovality**, and more.

An advanced array of LiDAR sensors measures the pipe above the flow line, and sonar measures below, calculating **sediment and debris volume**.

Standard reports include a high-density 3-D point cloud, LiDAR cross sections, a full NASSCO PACP report, and HD video of the pipe's interior. **Deliverables can be customized as needed.**

